



Alf Hurum Centennial *in the conservatory*

Sunday, April 28 at 4:00 pm
W. W. Seymour Conservatory
Tacoma

Sunday, May 5 at 5:00 pm
Volunteer Park Botanical Conservatory
Seattle

Featuring:

Nexus Quartet

Christopher Lin, violin

Liling Liao, violin

Hung-Wen Chen, viola

Janice Lee, cello

NW Grieg Manskor

Scott Fikse, chorusmaster

Joel Bevington, Matthew Bosely,

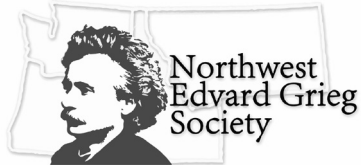
Brennan Brichoux, Andrew Jones,

Neil Jordan, Cary Lee,

Carson Truett Lott, & Ken Potter

Performing:

Alf Hurum



Northwest Edvard Grieg Society
presents

Alf Hurum Centennial in the conservatory

PROGRAM

String Quartet, Op. 6

Alf Hurum (1882-1972)

1. Allegro non troppo e maestoso
2. Scherzo
3. Canzonetta
4. Allegro energico

*Nexus String Quartet
Christopher Lin & Liling Liao, violins
Hung-Wen Chen, viola, & Janice Lee, cello*

Emigrantvisa

Nathan Molvik

Nexus String Quartet & Laura Loge, soprano

INTERMISSION

Lilja, Op. 15

Hurum

- Inledningsbøn. (Opening prayer)
- Skabelsen. (Creation)
- Bebudelsen. Kristi fødsel. (The annunciation. Christ's birth)
- Ave Maria.
- Kristi lidelse og død. (Christ's suffering and death)
- Ave Maria.
- Opstandelsen. (The resurrection)

*NW Grieg Mannskor, Scott Fikse, conductor & Laura Loge, soprano
Joel Bevington, Matthew Bosely, Brennan Brichoux, Andrew Jones,
Neil Jordan, Cary Lee, Carson Truett Lott, & Ken Potter*

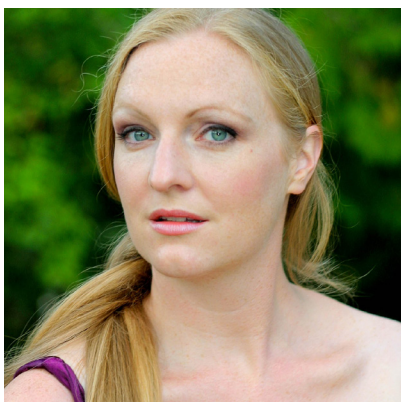
ARTIST BIOS



The **Nexus Quartet** is a nascent professional string quartet serving the Greater Puget Sound. Since forming in early 2024, the quartet has already recorded an album of three string quartets by local composer Charles Roland Berry, to be distributed on Naxos, and is excited to be performing for the Alf Hurum Centennial as well as on KING FM on Northwest Focus Live, sponsored by the Northwest Edvard Grieg Society. Despite working and studying all around the globe, every member of the quartet can trace their journey to Seattle from Taiwan, a nexus from which the quartet takes its name.

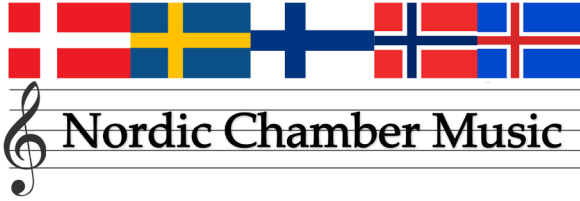


Scott Fikse is a second-year Masters in Choral Conducting student at the University of Washington, as well as a vocal coach and adjudicator, conductor, and choral scholar with various organizations in the greater Seattle area. Scott moved to Seattle from Honolulu in 2022, where he directed the music program at the Lutheran Church of Honolulu and created the church's popular "First Mondays" and "Jazz Journey" concert series. Under his direction the LCH choirs prepared over 200 works each year, ranging from chant, Renaissance polyphony, and Baroque works to modern masters. He also served as director of the Honolulu Chorale and artistic director of Early Music Hawai'i. Scott has a degree in musical arts from Pacific Lutheran University, where he was a founding member of the university's student-run ensemble PLUtonic. After studies at PLU, Scott worked as a judge with Varsity Vocals and as a quartet vocalist and arranger with Celebrity Cruises. He still performs with his cruise ship quartet when the group's schedule allows, recently celebrating their 11th anniversary this past summer. In his free time Scott enjoys travel, hiking, fishing, and practicing yoga and meditation.



Soprano **Laura Loge** has been hailed for her "luminous stage presence" and "characterful and versatile voice." In addition to appearing as a soprano soloists with orchestras, on chamber music stages and in numerous opera roles, Laura specializes in Nordic art song and chamber music, having performed across the United States and in Norway, including in Edvard Grieg's villa. She has produced two albums of Nordic song, including *Breaking the Language Barrier: Songs in Norwegian and Danish, Composed by Foreigners* and *Songs and Piano Music of Edvard Grieg, Op. 33 & 66*. Her next album, *Der Skreg en Fugl*, featuring previously unrecorded songs by Norwegian women with pianist Angela Draghicescu will be released in 2025 on the Chandos lable. Laura is Artistic Director of Nordic Chamber Music, Founder and President of the Northwest Edvard Grieg Society, and Concert Series Coordinator at Saint Mark's Episcopal Cathedral in Seattle. She received her Bachelor of Music from Saint Olaf College, her Master of Music from the New England Conservatory, and studied Nordic Art Song and chamber music at the University of Stavanger Conservatory of Music.

Join us for our upcoming concerts!



Iceland
May 19 @ 2 pm
Ballard First Lutheran Church

Bells & Pipes, Fire & Ice
Brian Chin, trumpet
Douglas Cleveland, organ

nordicchambermusic.org

The Northwest Edvard Grieg Society is supported, in part, by 4Culture and ArtsWA. The Alf Hurum Centennial Celebration is also supported by the Sons of Norway Foundation and presented in partnership with the Cascadia Art Museum, W. W. Seymour Conservatory, and Friends of the Volunteer Park Conservatory. We are grateful for their support and collaboration.



Norwegian Reinvention

June 8
Kenworthy Theater, Moscow

June 9
The Seasons, Yakima

June 10
First Free Methodist Church, Seattle

nwegriegsociety.org



THE NORWEGIAN AMERICAN

Powered by Norway House

Enjoy America's only Norwegian newspaper delivered directly to your mailbox or access it digitally on demand!



SUBSCRIBE TODAY!

The *Norwegian American*, founded in 1889, is a unique publication that brings you up-to-date news from Norway and Norwegian communities across the United States, including business, arts, culture, travel, sports, food, Nordic heritage, language, and much more!

Published monthly, our print edition is a visual feast, also available digitally, along with thousands of articles in our online archives.

subscribe@norwegianamerican.com
norwegianamerican.com

With plans starting at \$7 a month, what are you waiting for?



WE WISH YOU MANY HOURS OF HAPPY READING!

Donations are welcome and always appreciated. Donate securely and easily by scanning this QR code.

